

Further information:

Christian Fellowship For Disabled, Wellington Branch

Camp Directors:

Diana O'Hara
Mobile: 0274144311
email: dilovesjesus@hotmail.com

David Lusk
Mobile: 0274990005
Email: davelusk@yahoo.co.nz

Branch Chairperson & Secretary:

John and Lyn Hawkins
14 Moana Grove, Waiwhetu, Lower Hutt 5010
tel: (04) 569 9096 Mobile: 0274343643
email: cffd-wgtn@actrix.co.nz

monthly meetings – prayer support – home group
information booklets – national & regional camps

CFFD Wellington is one of many branches nationwide that are part of:

Elevate Christian Disability Trust
173 Mount Smart Road
Onehunga, Auckland
Ph or Fax (09) 636 4763
email: info@elevatecdt.org.nz
web: elevatecdt.org.nz

A ministry for people who have a disability,
their families, carers and friends.

YOU ARE WELCOME

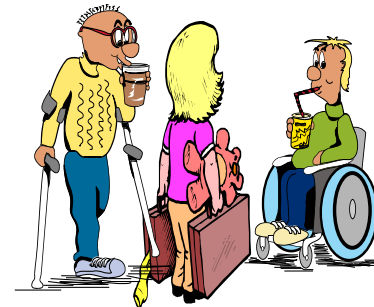
at the

Christian Fellowship For Disabled Wellington Regional Camp

EXCELLENCE

WITH GOD

with *Pastor Taka Kauri*
from Hope Centre, Lower Hutt



8th - 10th March 2019
El Rancho, Waikanae

This camp is administered by Christian Fellowship For Disabled - Wellington Branch for persons with or without a disability, families, carers and friends.

PROGRAMME: Camp offers an opportunity for everyone to join together for meetings and meals, experience activities such as horse riding, watersliding, go-karting, horse-riding and participate in small group sharing times. It is aimed to encourage and uplift.

BUDDY SYSTEM: CFFD will partner each camper with a buddy to provide friendship, care and support.

PERSONAL CARE: Some campers require a high level of personal care and if at all possible, **please bring your own support person**. The Camp Directors need people who are willing to provide help to the main support person.

DATE: Friday 8th to Sunday 10th March 2019.
Registrations on Friday from 5.30pm to 6.30pm (BBQ, tea & coffee available) and camp concludes by approx 2.30pm Sunday.

ACCOMMODATION: Our camp is based in the Elm Court complex where facilities are accessible, and motel standard. Every endeavor is made to accommodate people according to their need.

TRAVEL: Transport for **full weekend campers from Wellington** can be arranged by CFFD (usually shuttles or taxi vans) and will call at one central point in Lower Hutt, Wellington and Porirua to pick up **pre-booked passengers only**. Return on Sunday will drop-off at the same central points only. Times will be notified a few days prior to camp.

Please **KEEP** this Information Sheet as it contains the details you need to know.

COSTS: (inclusive of meals)

CFFD gratefully acknowledges the grants received from the TG McCarthy & Ann Sinclair Trusts and the Community Organisations Grants Scheme that enable the fees for this camp to be hugely subsidised for everyone.

Adults:	\$80
Under 15	\$40
Families	by arrangement
Day visitor (Sat)	\$30 (lunch and dinner only)
Transport arranged by CFFD	\$30 return

Cheques payable to CFFD Wellington or direct credit to Account 010142-0029685-12, with surname as reference.

REGISTRATION:

Forms to be returned **as soon as possible:**

CFFD Wellington Camp
C/-14 Moana Grove
Waiwhetu
Lower Hutt 5010
Email: cffd-wgtn@actrix.co.nz

If there is no registration form with this information, please ring John or Lyn, on (04) 569-9096, who will post one to you.